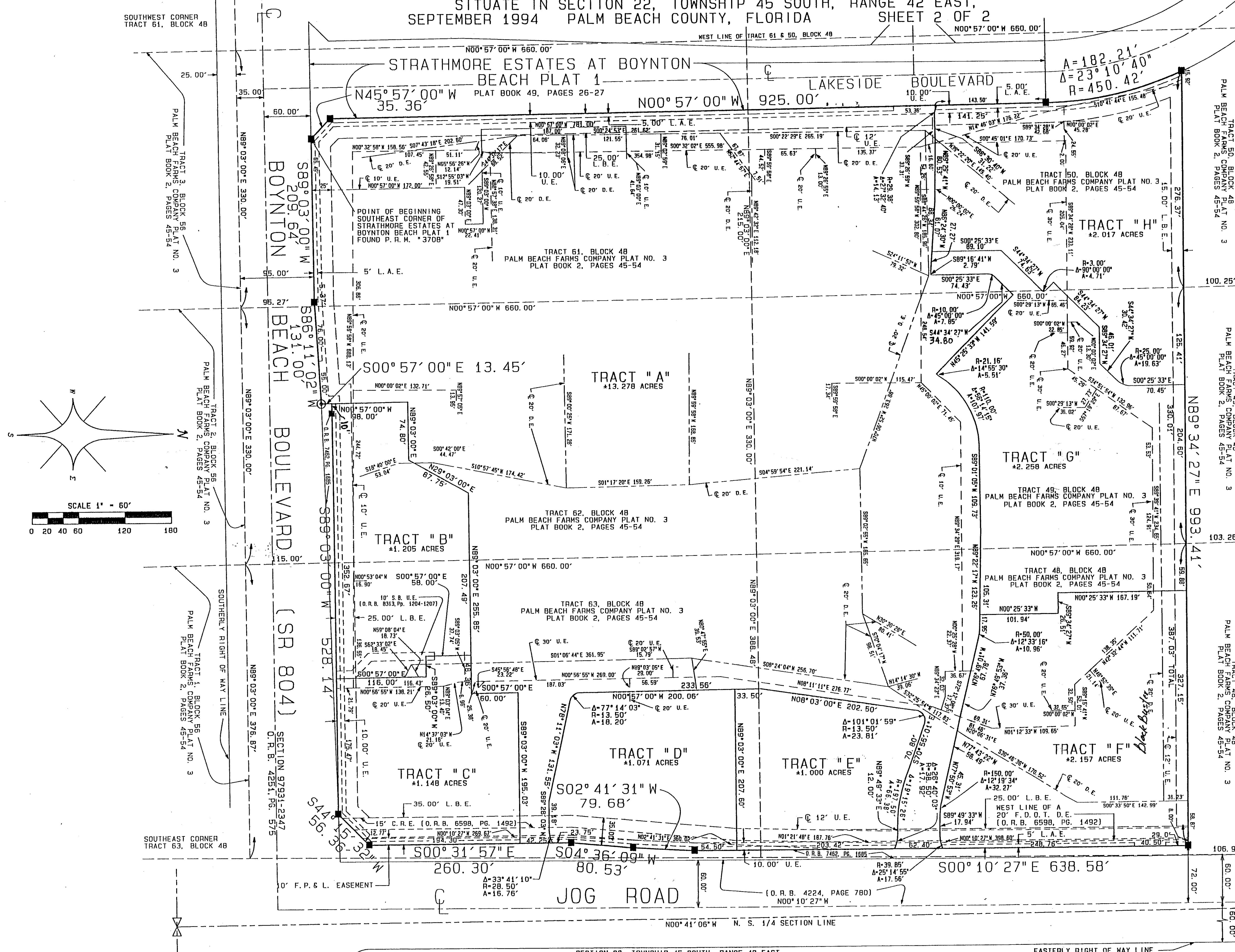


# FOUNTAINS OF BOYNTON

BEING A REPLAT OF A PORTION OF BLOCK 48 OF "PALM BEACH FARMS COMPANY PLAT NO. 3" AS RECORDED IN PLAT BOOK 2, PAGES 45 THROUGH 54 SITUATE IN SECTION 22, TOWNSHIP 45 SOUTH, RANGE 42 EAST, SEPTEMBER 1994 PALM BEACH COUNTY, FLORIDA SHEET 2 OF 2

0601-002

# 58



STATE OF FLORIDA  
COUNTY OF PALM BEACH } 99  
THIS PLAT WAS FILED FOR  
RECORD AT \_\_\_\_\_ DAY OF  
THIS \_\_\_\_\_ MONTH  
DULY RECORDED IN PLAT BOOK  
PLAT BOOK 2, PAGES 45-54 AND  
ON PAGES \_\_\_\_\_ AND  
DOROTHY H. WILKEN, CLERK  
CIRCUIT COURT  
BY: \_\_\_\_\_ DC

LEGEND:  
C.R.E. CONSTRUCTION RESTORATION  
L.B.E. EASEMENT BUFFER EASEMENT  
U.L.E. UTILITY EASEMENT  
F.D.O.T. FLORIDA DEPARTMENT OF  
TRANSPORTATION  
F.P. & L. FLORIDA POWER & LIGHT  
O.P.B. OFFICIAL RECORD BOOK  
PAGE  
D.E. DRAINAGE EASEMENT  
S.B. SOUTHERN BELL

CAD FILE: 92335PLA  
ATLANTIC - CARIBBEAN MAPPING, INC.  
PROFESSIONAL LAND SURVEYORS  
367 LIANA DRIVE  
WEST PALM BEACH, FLORIDA 33410  
(407) 667-5898 FAX (407) 471-8758  
91074 FOUNTAINS OF BOYNTON  
RECORD PLAT

SECTION 22, TOWNSHIP 45 SOUTH, RANGE 42 EAST  
(NOT PLATTED)

EASTERLY RIGHT OF WAY LINE